

Descendants of James Pincock

DESCENDANTS OF JAMES PINCOCK

(~1753 - 1825)

RESEARCHED BY FRED PINCOCK
AUGUST 2019

Descendants of James Pincock

Dedication

This document is dedicated to James Pincock (1849-1935) who was the first Pincock to set foot on Canadian soil, although Newfoundland at that time was still a colony of Great Britain. As far as I know every person in Canada with the surname Pincock is related to this ancestor. In addition there is wider set of ancestors without the surname who also are directly related.

Acknowledgments

I started this research after I retired in 2005. Initially I used various research sites and then included extended family resources. The English records were mostly obtained from census data, civil records and local church records, especially the Leyland Church of England records of St. Andrew church.

Many of the more recent records I have obtained from living relatives. I would specifically acknowledge Olive Marion Pincock, daughter of James Pincock (1849-1935), Margaret Carr, daughter of Nellie Pincock (1887-1949) and William Carr (1894-1995) and William (Jim) Pincock son of Thomas Alexander Pincock (1894-1978) and Ida Whipple (1892-1984). Specifically from these three people I have received first hand accounts of events, pictures and in some cases diaries and letters.

I would also acknowledge the support of my brother Doug Pincock for providing this web site to publish my research. As a result of his web site I have also discovered a Pincock relative and family in Australia. Hopefully there may be other Pincock relatives who will be discovered and benefit from this site.

Table of Contents

Dedication	2
Acknowledgments	2
Introduction	5
Family Tree	6
I - James PINCOCK (~1753-1825)	6
II - William PINCOCK (1783-1864)	6
III - John PINCOCK (1822-1895)	8
IV - William PINCOCK (1846-1914)	8
IV - Rev. James PINCOCK (1849-1933)	10
V - James C. (Clayton) PINCOCK (1885-1976)	12
VI - Margaret H. PINCOCK (1914-2009)	12
VII - Beth GALLIMORE.....	12
VII - Lynn GALLIMORE.....	12
VI - George L. PINCOCK (1916-2000)	13
VII - Douglas G. PINCOCK.....	13
VII - James A. PINCOCK.....	14
VII - Frederick J. PINCOCK.....	14
VI - Dr. James (Graham) PINCOCK (1919-2003).....	15
VII - Margaret PINCOCK.	15
VII - Helen PINCOCK.	15
VII - Mary O. PINCOCK.....	16
VII - Gordon J. PINCOCK.....	17
VII - Donald G. PINCOCK.....	17
VI - Olive M. PINCOCK	18
VII - Patricia M. (Patty) SHAW.	18
VII - Marion L. SHAW.....	18
VII - Beverley M. SHAW.....	18
V - Dr. Thomas A. PINCOCK (1894-1978)	19
VI - William J. (Jim) PINCOCK.....	19
VII Fred A. PINCOCK.....	19
VII Edward J. PINCOCK.....	19

A Family Tree	
VII - William T. PINCOCK.....	19
VI - Joan I. M. PINCOCK.....	20
VII - Allison FRIESEN.....	20
VII - Walter B. FRIESEN.	21
VII - Margaret FRIESEN.....	21
VII - Leslie A. FRIESEN.....	21
IV - John PINCOCK (1851-1933)	22
V - Harry PINCOCK.....	22
Genealogical Table	23
James Pincock (~1753-1825)	23
William Pincock (1846-1914).....	24
Rev. James Pincock (1849-1933).....	25
George L. Pincock (1916-2000)	25
Douglas G. Pincock	25
John Pincock (1851-1933)	26
Thomas A. Pincock (1894-1978).....	27
James G. Pincock (1919-2003).....	28
Olive M. Pincock	29
Other Family Charts	29
James A. Pincock	29
Frederick Pincock	30
Helen Pincock	31
Mary Pincock	32
Joan Pincock	33

Introduction

In 2014 I published a book on the Pincock Ancestry. You can find a copy of this book on this web site. The information here provides information and family charts on the various branches of the Pincock family. While there are probably many Pincock direct relatives in England, I have concentrated on the extended Pincock family in Canada. I have deleted, other than names, any personal information of individuals who are alive. However for most of these relatives, I have birth and marriage records. I can provide this information to appropriate family members for genealogy purposes.

I have collected many other documents, notably from civil records and newspapers to verify the data provided here of various events. I can provide appropriate documentation to confirm the information provided for legitimate requests.

As families continue to grow through births and marriages, I may not have documented all current relatives. If anyone wishes to provide additional information, I will add it to these charts.

A Family Tree

Family Tree

I - James PINCOCK (~1753-1825)

He was born about 1753, died in 1825 in Euxton (Lancaster), Euxton, was buried in Leyland (St. Andrew Church) cemetery (Lancaster), England.

He married **Margaret LANG (1760-1786)**, daughter of James LANG and Rachel BURSCOUGH (-1767) on Thursday, December 27, 1781 in Leyland (St. Andrew Church) (Lancaster), England.

He next married **Ellen WOODS (~ 1748-1830)** on Friday, July 28, 1786 in St. Andrew Church (England), England.

By Margaret James had:

1) **Rachel PINCOCK.**

She was christened on Sunday, January 13, 1782 in Leyland (St. Andrew Church) (Lancaster), England, died.

2) **William PINCOCK**, as follows in II.

By Ellen James had:

1) **Elizabeth PINCOCK.**

She was born in 1787 in Euxton (Lancaster), Euxton, was christened on June 24, 1887 in St. Andrew Church (England), England, died.

2) **Laurence PINCOCK.**

He was born on Tuesday, May 12, 1789 in Euxton (Lancaster), Euxton, was christened on Sunday, June 14, next in St. Andrew Church (England), England, died.

3) **John PINCOCK.**

He was born on Sunday, November 13, 1791 in Euxton (Lancaster), Euxton, was christened on Sunday, November 20, next in Euxton (Parish Church) (Lancaster), Lancashire, died on Wednesday, October 1, 1845 in Nauvoo (Hancock County), Illinois, was buried two days later in the same place, Illinois.

4) **Margaret PINCOCK.**

She was born on Sunday, April 13, 1794 in Euxton (Lancaster), Euxton, was christened on Sunday, April 20, next in Euxton (Parish Church) (Lancaster), Lancashire, died.



II - William PINCOCK (1783-1864)

He was born in Euxton (Lancaster), Lancashire, was christened on Sunday, November 9, 1783 in Leyland (St. Andrew Church) (Lancaster), England, died about February 1864 in Leyland (England), England.

He married **Sarah SWIFT (1789-1819)** on Monday, September 29, 1806 in Leyland (St. Andrew Church) (Lancaster), England.

He next married **Mary EDGE (~ 1791~ 1863)** on Wednesday, October 20, 1819 in Euxton (St Laurence) (Lancaster), Lancashire.

By Sarah William had:

1) **James PINCOCK.**

He was born in Eccleston (Lancaster), Eccleston, was christened on Sunday, May 10, 1807 in Leyland (St. Andrew Church) (Lancaster), England, died.

2) **Alice PINCOCK.**

She was born in Euxton (Lancaster), Euxton, was christened on Sunday, July 26, 1812 in Leyland (St. Andrew Church) (Lancaster), England, died, was buried on Saturday, September 30, 1820 in Euxton (Parish Church) (Lancaster).

3) **Margaret PINCOCK.**

She was born in Leyland (England), England, was christened on Sunday, September 4, 1814 in Leyland (St. Andrew Church) (Lancaster), England, died.

She married **Richard WILDING** on Sunday, February 10, 1839 in Leyland (St. Andrew Church) (Lancaster), England.

Offspring:

Descendants of James Pincock

a) **Sarah WILDING.**

She was born in Eccleston (Lancaster), Eccleston, was christened on Sunday, June 30, 1839 in Leyland (St. Andrew Church) (Lancaster), England, died.

4) **William PINCOCK.**

He was born on Friday, November 1, 1816 in Leyland (England), England, was christened on Sunday, December 22, next in St Mary the Virgin (Lancashire), Lancashire, died.

By Mary William had:

1) **John PINCOCK.**

He was born about November 1820 in Leyland (England), was christened on Sunday, January 14, 1821 in Leyland (St. Andrew Church) (Lancaster), England, died in February next in Euxton (Parish Church) (Lancaster), Lancashire, was buried on the same day in the same place.

2) **John PINCOCK**, as follows in III.

3) **Elizabeth PINCOCK.**

She was born in 1827 in Euxton (Lancaster), Euxton, was christened on December 25, 1827 in Leyland (St. Andrew Church) (Lancaster), England, died.

She married **John WATKINSON (~ 1815-)** on Monday, November 20, 1848 in St. Andrew Church (England), England.

4) **Mary PINCOCK.**

She was christened on Sunday, February 1, 1835 in Leyland (St. Andrew Church) (Lancaster), England, died.



A Family Tree

III - John PINCOCK (1822-1895)

He was born in 1822 in Euxton (Lancaster), Lancashire, was christened on June 14, 1822 in Leyland (St. Andrew Church) (Lancaster), England, died in March 1895 in Farington (Lancaster), Lancashire, was buried on March 25, 1895 in Leyland (St. Andrew Church) (Lancaster), England.

He married **Ann MOSS (1823-1900)**, daughter of Robert MOSS (1785-1868) and Ann CROOK (1784-1849) on Thursday, October 2, 1845 in Leyland (St. Andrew Church) (Lancaster), England.

Offspring:

1) **William PINCOCK**, root person of the SENIOR BRANCH as follows.

2) **Robert PINCOCK**.

He was born in August 1848 in Clayton-le-Woods (Lancashire), England, was christened August 27, 1848 in Leyland (St. Andrew Church) (Lancaster), England, died on Friday, May 19, 1916 in Wolverhampton (Borough of Wolverhampton), Staffordshire.

He married **Esther COCKER (1850~1926)**, daughter of William COCKER and Ellen WALKER (~1820-1858) in June 1874 in Preston (Lancaster), England.

There is no record of children from this marriage

3) **Rev. James PINCOCK**, root person of the CADET BRANCH as follows.

4) **John PINCOCK**, root person of the YOUNGER BRANCH as follows.

5) **Mary A. PINCOCK**.

She was born in August 1854 in Clayton-le-Woods (Lancashire), England, was christened on Sunday, September 3, next in Leyland (St. Andrew Church) (Lancaster), England, died about Mar 1898 in Leeds (Yorkshire), Yorkshire.

She married **William COCKER (1852-1900)**, son of William COCKER and Ellen WALKER (~1820-1858) in September 1877 in Chorley (Lancaster), Lancashire.

Offspring:

a) **Herbert J. COCKER**.

He was born about May 1879 in Farington (Lancaster), Lancashire, died.

b) **Alice E. COCKER**.

She was born about August 1884 in Leeds (Yorkshire), Yorkshire, died on Friday, January 24, 1930 in Wolverhampton (Borough of Wolverhampton), Staffordshire.

c) **Mary A. COCKER**.

She was born in 1888 in Leeds (Yorkshire), Yorkshire, died.

6) **Ellen PINCOCK**.

She was born in April 1856 in Clayton-le-Woods (Lancashire), England, was christened April 27, 1856 in Leyland (St. Andrew Church) (Lancaster), England, died on Saturday, June 5, 1920 in Leyland (England), England, was buried on Wednesday, June 9, next in Leyland (St. Andrew Church) (Lancaster), England. She did not marry and had no children.

7) **Thomas PINCOCK**.

He was born in February 1865 in Clayton-le-Woods (Lancashire), England, was christened on Sunday, Mar 5, next in St. Andrew Church (England), England, died in Farington (Lancaster), Lancashire, was buried on Wednesday, February 26, 1868 in Leyland (St. Andrew Church) (Lancaster), England.

SENIOR BRANCH

IV - William PINCOCK (1846-1914)

He was born in 1846 in Leyland (England), England, was christened December 20, 1846 in Leyland (St. Andrew Church) (Lancaster), England, died on Saturday, January 31, 1914 in Leeds (Yorkshire), Yorkshire, was buried.

He married **Margaret COCKER (1845-1886)**, daughter of William COCKER and Ellen WALKER (~1820-1858) on Saturday, January 2, 1869 in Farington (St. Paul) (Lancaster), Lancashire.

He next married **Emma F. CROUCH** about May 1887 in Leeds (Yorkshire), Yorkshire.

Descendants of James Pincock

By Margaret William had:

1) **Ellen PINCOCK.**

She was born about August 1870 in Farington (Lancaster), Lancashire, died about May 1879 in Blackburn (Borough of Blackburn With Darwen), England.

2) **Frederick James PINCOCK.**

He was born about May 1876 in Blackburn (Borough of Blackburn With Darwen), England, died. By 1910 US Census living in Minneapolis, Minnesota. In 1918 became US citizens and changed name to **PINCOE.**

He married **Ethyl PRYCE (~ 1875-1944)** about February 1902 in Brentford District, England.

Offspring:

a) **Mildred PINCOCK.**

She was born about August 1902 in Leeds (Yorkshire), Yorkshire, died.

b) **Doris PINCOCK.**

She was born about November 1904 in Leeds (Yorkshire), Yorkshire, died.

c) **Edward PINCOCK.**

He was born about August 1908 in ?, Minnesota, died.

3) **William A. PINCOCK.**

He was born in April 1882 in Blackburn (Borough of Blackburn With Darwen), England, died.

He married **Lily BABB (1881-)**, daughter of BABB and Elizabeth ?UNKNOWN (~ 1853-) about Mar 1907 in St. Augustine (Leeds District), Leeds District.

Offspring:

a) **William S. PINCOCK.**

He was born on Tuesday, October 15, 1907 in Winnipeg, MB, died on Tuesday, January 10, 1911 in St. Boniface, MB.

b) **Athur (Roland) PINCOCK.**

He was born on Saturday, October 22, 1910 in Winnipeg, MB, died.

c) **Robert N. PINCOCK.**

He was born on Thursday, May 8, 1913 in Brandon, MB, died.

d) **Kathleen M. PINCOCK.**

She was born on Wednesday, December 15, 1915 in St. Boniface, MB, died.

e) **Alan PINCOCK.**

He was born about 1918 in ?, MB, died.

f) **Kinnette PINCOCK.**

He was born about 1921 in ?, MB, died.

A Family Tree

CADET BRANCH

IV - Rev. James PINCOCK (1849-1933)

He was born on Saturday, December 1, 1849 in Clayton-le-Woods (Lancashire), England, was christened on Sunday, January 13, 1850 in Leyland (St. Andrew Church) (Lancaster), England, died on Monday, August 28, 1933 in Winnipeg, MB, was buried two days later in Winnipeg (Elmwood Cemetery), MB.

He married **Margaret A. ROONEY (1855-1935)**, daughter of James ROONEY (~1824-1886) and Elizabeth BARTLETT (~1834-1922) on Tuesday, July 2, 1878 in, St. John's Newfoundland.

Offspring:

1) **Bessie R. PINCOCK.**

She was born on Tuesday, December 2, 1879 in Petites, Newfoundland, was christened on Sunday, February 22, 1880 in the same place, Newfoundland, died in 1950 in Winnipeg, MB, was buried in Winnipeg (Elmwood Cemetery), MB. She did not marry

2) **Frederick W. PINCOCK.**

He was born on Thursday, Mar 3, 1881 in Petites, Newfoundland, was christened the following day in the same place, Newfoundland, died after 1983.

He married **Millicent WOODS (~ 1885-?)**, daughter of Henry J. B. WOODS Hon (1842-1914) and Hannie L. BEMISTER on Saturday, August 31, 1918 in Toronto, ON.

There were no children from this marriage.

3) **Robert N. PINCOCK.**

He was born on Tuesday, January 16, 1883 in Morton's Harbour, Newfoundland, was christened on Sunday, May 20, next in the same place, Morton's Harbour Newfoundland, died on Friday, May 11, 1928 in St. Catharines, ON, was buried on Monday, May 14, at Victoria Lawn Cemetery, St. Catharines, ON.

He married **Jennie O'HARA (1890-1948)**, daughter of Benson O'HARA (1848-1920) and Minnie KETCHESON (1862-1906) on Tuesday, June 15, 1915 in Des Moines (Polk County), Iowa.

There were no children from this marriage.

4) **James C. (Clayton) PINCOCK**, as follows in V.

5) **Nellie M. PINCOCK.**

She was born on Monday, May 16, 1887 in Little Bay Islands, Newfoundland, was christened on Sunday, July 24, next in the same place, Newfoundland, died on Monday, December 26, 1949 in Winnipeg, MB, was buried in Winnipeg (Elmwood Cemetery), MB.

She married **Walter E. CARR (1894-1955)**, son of Robert L. CARR (1863-1947) and Evelyn M. HOLMES (1867-1949) on Saturday, September 29, 1923 in Winnipeg, MB.

Offspring:

a) **Margaret (Marg) CARR.**

She was born on Saturday, August 29, 1925 in Winnipeg, MB.

6) **Isabel (Belle) PINCOCK.**

She was born on Sunday, October 28, 1888 in Western Bay, Newfoundland, was christened on Monday, February 11, 1889 in the same place, Newfoundland, died about Mar 1890 in the same place, Newfoundland, was buried in Ochre Pit Cove Cemetery, Newfoundland.

7) **John A. PINCOCK.**

He was born on Wednesday, Mar 12, 1890 in Western Bay, Newfoundland, was christened on Wednesday, May 7, next in the same place, Newfoundland, died on Sunday, August 13, 1972 in Winnipeg, MB, was buried in Chapel Lawn Cemetery, Winnipeg, MB.

He married **Etta MACCAULL (~ 1889-1962)**, daughter of John MACCAULL (~ 1848-) and Louisa ? UNKNOWN (~ 1849-) in 1916.

Offspring:

a) **James (Eric) M. PINCOCK.**

He was born on Wednesday, September 11, 1918 in Dorchester, NB, died on Sunday, Mar 5, 2000 in Ottawa, General Hospital, was buried in the same place, Pinecrest Cemetery.

He married **Margaret LIVINGSTONE (-1999)** about 1945.

Descendants of James Pincock

8) **Marion PINCOCK.**

She was born on Friday, November 6, 1891 in Cupids, Newfoundland, was christened on Monday, February 15, 1892 in Brigus, Newfoundland, died on Thursday, December 29, 1983 in Winnipeg, MB, was buried in Winnipeg (Elmwood Cemetery), MB. She did not marry.

9) **Dr. Thomas A. PINCOCK**, root person of the Extant branch from Thomas PINCOCK with Ida WHIPPLE as follows.



A Family Tree

V - James C. (Clayton) PINCOCK (1885-1976)

He was born on Thursday, September 3, 1885 in Little Bay Islands, Newfoundland, was christened on Thursday, November 12, next in the same place, Newfoundland, died on Friday, February 20, 1976 in Winnipeg, MB, was buried in Winnipeg (Elmwood Cemetery), MB.

He married **Olive H. STOTHART (1887-1942)**, daughter of George STOTHART (1850-1912) and Matilda HAVILAND (1856-1936) on Wednesday, July 3, 1912 in Chatham (St Andrew'S Church) (Northumberland), Chatham NB.

Offspring:

- 1) **Margaret H. PINCOCK** as follows VI
- 2) **George L. PINCOCK**, as follows in VI.
- 3) **Dr. James (Graham) PINCOCK**, root person of the Extant branch from James PINCOCK with Shirley GORDON as follows.
- 4) **Olive M. PINCOCK**, root person of the Extant branch from Olive PINCOCK with Michael SHAW as follows.



VI - Margaret H. PINCOCK (1914-2009)

She was born on Wednesday, October 14, 1914 in Winnipeg, MB, died on Sunday, February 22, 2009 in Brockville, ON.

She married **Bert GALLIMORE (1913-)**, son of George GALLIMORE and Margaret F. BRADLEY on Friday, October 20, 1939 in ?, PQ.

Offspring:

VII - Beth GALLIMORE.

VII - Lynn GALLIMORE.

Descendants of James Pincock

VI - George L. PINCOCK (1916-2000)

He was born on Thursday, January 6, 1916 in Winnipeg, MB, died on Friday, June 16, 2000 in Halifax, NS.

He married **Sarah (Sadie) BOYLE (1918-2009)**, daughter of Joseph BOYLE (1883-1963) and Agnes SUTTER (1884-1964) on Friday, October 27, 1939 in 108 Hart Ave. Winnipeg, MB.

Offspring:

- 1) **Douglas G. PINCOCK**, as follows in VII.
- 2) **James A. PINCOCK**, root person of the Extant branch from James PINCOCK with Alexandra GRENKIW as follows.
- 3) **Frederick J. PINCOCK**, root person of the Extant branch from Frederick PINCOCK with Sarah HEMSWORTH as follows.



VII - Douglas G. PINCOCK.

He was born in Vancouver, BC.

He married **Gloria WERTH** in Regina. Their union ended in divorce, in 1986.

He next married **Marilyn SPEARNS**, daughter of Jerome SPEARNS (~1930-2018) and Mildred LUNDRIGAN (1931-2013)

By Gloria Douglas had:

- 1) **Barry D. PINCOCK**.
He was born in Winnipeg.

Offspring:

- a) **Fletcher PINCOCK**.

- 2) **James (Jim) F. PINCOCK**.
He was born in Winnipeg.

He married **Bridgitte LONGSHORE**

Offspring:

- a) **Madison PINCOCK**.

- b) **Brock PINCOCK**.

- c) **Emily PINCOCK**.

- d) **Nick PINCOCK**.

- 3) **David PINCOCK**.

He married **Carrie SHAW**

Offspring:

- a) **Ashley PINCOCK**.

- b) **Micheal PINCOCK**.

- 4) **Lisa PINCOCK**.

A Family Tree

She married **John METTAM**

Offspring:

a) **Alyssa METTAM.**

b) **Kaitlan METTAM.**

c) **Brandon METTAM.**

**Extant branch from
James PINCOCK with Alexandra GRENKIW
VII - James A. PINCOCK.**

He was born in Vancouver, BC.

He married **Alexandra GRENKIW** in Winnipeg, MB.

Offspring:

1) **Katherine (Kathy) PINCOCK.**

She married **Sean HANDCOCK** in Halifax, NS.

Offspring:

a) **Benjamin O. HANDCOCK.**

b) **Alicia G. HANDCOCK.**

2) **Christine PINCOCK.**

**Extant branch from
Frederick PINCOCK with Sarah HEMSWORTH
VII - Frederick J. PINCOCK.**

He was born in Vancouver, BC.

He married **Sarah E. (Sally) HEMSWORTH**, daughter of Lloyd H. F. HEMSWORTH (1915-1999) and Elizabeth (Betty) COUCH (1916-1983) in Erindale, ON (now Mississauga). Their union ended in divorce.

He next married **Patricia J. (Pat) ALLAN** daughter of William ALLAN and Joan HADLEY (1930-2018) in Toronto, ON.

By Sarah Frederick had:

1) **Christopher J. (Chris) PINCOCK.**

He married **Brandi SPENCER** in Lafayette (Tippecanoe County), USA. Their union ended in divorce.

USA. He next married **Tansel YILMAZER**, daughter of Önder YILMAZER and Necla ÖZAY in Lake of the Ozarks,

By Tansel Christopher had:

a) **Layla S. Y. PINCOCK.**

2) **Mark J. PINCOCK.**

He married **Jill M. VANDERZAND**, daughter of John VANDERZAND and Joy CASTELLO in Toronto, ON.
No children were born to this family.

There are no children of this marriage.

3) **Heather A. PINCOCK.**

Descendants of James Pincock

**Extant branch from
James PINCOCK with Shirley GORDON**

VI - Dr. James (Graham) PINCOCK (1919-2003)

He was born on Sunday, November 16, 1919 in Winnipeg, MB, died on Wednesday, August 27, 2003 in the same place, MB.

He married **Shirley J. GORDON**, daughter of William (Norman) GORDON (1886-1949) and Mary (Molly) C. BONAR (1892-1976) in Toronto, ON.

Offspring:

- 1) **Margaret PINCOCK**, as follows in VII.
- 2) **Helen PINCOCK**, root person of the Extant branch from Helen PINCOCK with William DARTNELL as follows.
- 3) **Mary O. PINCOCK**, root person of the Extant branch from Mary PINCOCK with Stephen PARK as follows.
- 4) **Gordon J. PINCOCK**, root person of Extant branch from Gordon PINCOCK with Linda YOUNG as follows.
- 5) **Donald G. PINCOCK**, root person of Extant branch from Donald PINCOCK and Dawn TRAVIS as follows.



VII - Margaret PINCOCK.

She married **Robert J. KAVANAGH (1943-2009)**

Offspring:

- 1) **Shirley E. KAVANAGH.**
- 2) **Colleen M. KAVANAGH.**

She married **Paul WARREN**

Offspring:

- a) **Kyle WARREN.**

- b) **Ryan J. WARREN.**

- 3) **James G. KAVANAGH.**

He married **Andrea GANNON**

Offspring:

- a) **Caroline A. KAVANAGH.**
- b) **Charlotte C. KAVANAGH.**

**Extant branch from
Helen PINCOCK with William DARTNELL
VII - Helen PINCOCK.**

She married **William A. DARTNELL.**

Offspring:

- 1) **Andrew W. DARTNELL.**

He married **Lisa TRUANT**

A Family Tree

Offspring:

a) **Quinnlan J. DARTNELL.**

2) **Brian D. DARTNELL.**

He married **Sian TASAKA**

Offspring:

a) **Benjamin J. DARTNELL.**

3) **Peter A. DARTNELL.**

Offspring:

a) **Maerin DARTNELL.**

**Extant branch from
Mary PINCOCK with Stephen PARK
VII - Mary O. PINCOCK.**

She married **Stephen PARK.** Their union ended in divorce.

Offspring:

1) **Jennifer M. PARK.**

She married **Mike HILLER (1969-)**

Offspring:

a) **Evan HILLER.**

b) **Graham HILLER.**

c) **Oliver HILLER.**

d) **Campbell HILLER.**

2) **Julie M. PARK.**

She married UNKNOWN

Offspring:

a) **Nicholas PARK.**

b) **Olivia PARK.**

c) **Mackenzie PARK.**

d) **Molly PARK.**

3) **Heather L. PARK.**

She married **John SCOTT**

Offspring:

a) **Jack SCOTT.**

b) **Grace SCOTT.**

c) **Charlie SCOTT.**

d) **Sam H. SCOTT.**

Descendants of James Pincock

Extant branch from Gordon PINCOCK with Linda YOUNG VII - Gordon J. PINCOCK.

He was born on Thursday, November 18, 1948 in Oak River (), MB, died in May 2016 in Dubai, Dubai.

He married **Linda A. YOUNG**, daughter of Alexander YOUNG (-1994) and Alma KWAST (1914-2007) in Manitou. Their union ended in divorce.

Offspring:

a) **Jason M. PINCOCK.**

b) **Leigh PINCOCK.**

c) **Scott G. PINCOCK.**

d) **Shannon PINCOCK.**

e) **Kerry PINCOCK.**

f) **David PINCOCK.**

Extant branch from Donald PINCOCK with Dawn TRAVIS VII - Donald G. PINCOCK.

He was born in Winnipeg, MB

He married **Dawn A. TRAVIS**, daughter of TRAVIS and Marjorie (Marge) E. ?UNKNOWN (1927-2001) in Dryden.

Offspring:

a) **Robert J. PINCOCK.**

b) **Jorhi D. PINCOCK.**

A Family Tree

**Extant branch from
Olive PINCOCK with Michael SHAW**

VI - Olive M. PINCOCK

She was born in Winnipeg, MB.

She married **Michael L. SHAW (1928-1993)**, son of Thomas L. SHAW and Margaret A. LEES in Toronto, ON.

Offspring:

VII - Patricia M. (Patty) SHAW.

VII - Marion L. SHAW.

She married **Mark BEAVER**

VII - Beverley M. SHAW.

She married **Matthew J. BRITTEN**). Their union ended in divorce.

Offspring:

a) **Charlotte A. BRITTEN.**

b) **Liam F. BRITTEN.**

Descendants of James Pincock

**Extant branch from
Thomas PINCOCK with Ida WHIPPLE**

V - Dr. Thomas A. PINCOCK (1894-1978)

He was born on Tuesday, February 6, 1894 in Heart'S Content, Newfoundland, was christened on Sunday, August 26, next, died on Wednesday, May 24, 1978 in Winnipeg, MB, was buried on Tuesday, June 6, next in Brookside Cemetery, MB.

He married **Ida B. WHIPPLE (1892-1984)**, daughter of Frederick R. WHIPPLE (1858-1924) and Maud COLES (1867-1952) on Tuesday, August 15, 1922 in Saint John (St. Judes Church), NB.

Offspring:

1) **William J. (Jim) PINCOCK**, as follows in VI.

2) **Joan I. M. PINCOCK**, root person of the Extant branch from Joan PINCOCK with Alfred FRIESEN as follows.



VI - William J. (Jim) PINCOCK

He was born in ?, China.

He married **Clare (Clara) BUCHHOLZ (1925-)**

Offspring:

VII Fred A. PINCOCK.

He married **Cloe SCARF**

Offspring:

a) **Jasmine PINCOCK.**

b) **Nathaniel PINCOCK.**

VII Edward J. PINCOCK.

He married **Elizabeth BARRETT**

Offspring:

a) **Lydia C. PINCOCK.**

b) **Justin A. PINCOCK.**

c) **Benjamin G. PINCOCK.**

d) **Luke J. PINCOCK.**

3) **William T. PINCOCK**, as follows in VII.

VII - William T. PINCOCK.

He married **Crystal C. COUTTS**

Offspring:

1) **Charis C. PINCOCK.**

She married **Greg RIEPE**

She next married **Munden FREUND**

By Greg Riepe had:

a) **Jet W. RIEPE.**

A Family Tree

By Munden Freund had:

- a) **Caymen FREUND.**
- 2) **Starlyn PINCOCK.**

She married **Robin S. PEEL**

Offspring:

- a) **Zakoia PEEL.**
- b) **Kyre C. A. PEEL.**
- c) **Andrew PEEL.**
- d) **Dawson PEEL.**
- 3) **Cameo PINCOCK.**
- 4) **Jade PINCOCK.**

**Extant branch from
Joan PINCOCK with Alfred FRIESEN**

VI - Joan I. M. PINCOCK.

She was born on Monday, April 25, 1927, died on Tuesday, May 5, 1998.

She married **Alfred (Al) FRIESEN (1923-2007)** on Saturday, August 30, 1947.

Offspring:

- 1) **Allison FRIESEN**, as follows in VII.

- 2) **Walter B. FRIESEN.**

3) **Margaret FRIESEN**, root person of the Extant branch from Margaret FRIESEN with Donald BLACK as follows.

- 4) **Leslie A. FRIESEN.**

She married **Gyl TOSHACK.**

Offspring:

- a) **Kally J. TOSHACK.**

- 5) **Karen I. FRIESEN.**

- 6) **Alexander J. FRIESEN.**

He married **Cristy NEVEAU**



VII - Allison FRIESEN.

She married **Richard F. ANDRUCHUK**

Offspring:

- 1) **Katherine ANDRUCHUK.**

She married **Dean HEGAN**

Offspring:

- a) **Gabriella S. HEGAN.**

Descendants of James Pincock

2) **Kirsten M. ANDRUCHUK.**

3) **Amy J. ANDRUCHUK.**

Offspring:

a) **Ethan ANDRUCHUK.**

4) **Holly R. ANDRUCHUK.**

VII - Walter B. FRIESEN.

He married **Claudette ALBERT**

Offspring:

a) **Annette M. FRIESEN**

**Extant branch from
Margaret FRIESEN with Donald BLACK**

VII - Margaret FRIESEN.

She married **Donald H. BLACK**

Offspring:

1) **Cheryl D. BLACK.**

She married **Neil MCKINLAY**

Offspring:

a) **Paige A. MCKINLAY.**

2) **Trevor A. BLACK.**

3) **Steven C. BLACK.**

VII - Leslie A. FRIESEN.

She married **Gyl TOSHACK.**

Offspring:

a) **Kally J. TOSHACK.**

5) **Karen I. FRIESEN.**

6) **Alexander J. FRIESEN.**

He married **Cristy NEVEAU**

A Family Tree

YOUNGER BRANCH

IV - John PINCOCK (1851-1933)

He was born in October 1851 in Clayton-le-Woods (Lancashire), England, was christened on the same day in Leyland (St. Andrew Church) (Lancaster), England, died on Sunday, February 26, 1933 in Bristol (City of Bristol), Gloucestershire.

He married **Margaret COTTAM (1853-1893)** in December 1874 in Preston (Lancaster), England.

He next married **Mary A. W. DEWEY (~1865-1931)** in September 1894 in Barton Regis, Barton Regis.

By Margaret John had:

1) **Ernest R. PINCOCK.**

He was born about November 1875 in Preston (Lancaster), Lancashire, died on the same day in the same place, Lancashire.

2) **Ada E. PINCOCK.**

She was born about February 1878 in Preston (Lancaster), Lancashire, died about May 1879 in the same place, Lancashire.

3) **Edgar PINCOCK.**

He was born in June 1881 in Preston (Lancaster), England, died.

4) **Lizze A. PINCOCK.**

She was born in Mar 1884 in Preston (Lancaster), England, died.

5) **Harry PINCOCK**, as follows in V.

6) **Mabel PINCOCK.**

She was born in June 1888 in Fishponds (City of Bristol), Bristol, died.



V - Harry PINCOCK.

He was born in December 1886 in Fishponds (City of Bristol), Bristol, died.

He married **Nellie STONE** about November 1913 in Newton Abbot (County of Devon), Devonshire.

Offspring:

1) **John PINCOCK.**

He was born on Monday, Mar 15, 1915 in ? (Devonshire), England, died.

He married **Lilian F. MOODY (1919-)** about February 1940 in Haverfordwest (Pembrokeshire), Wales.

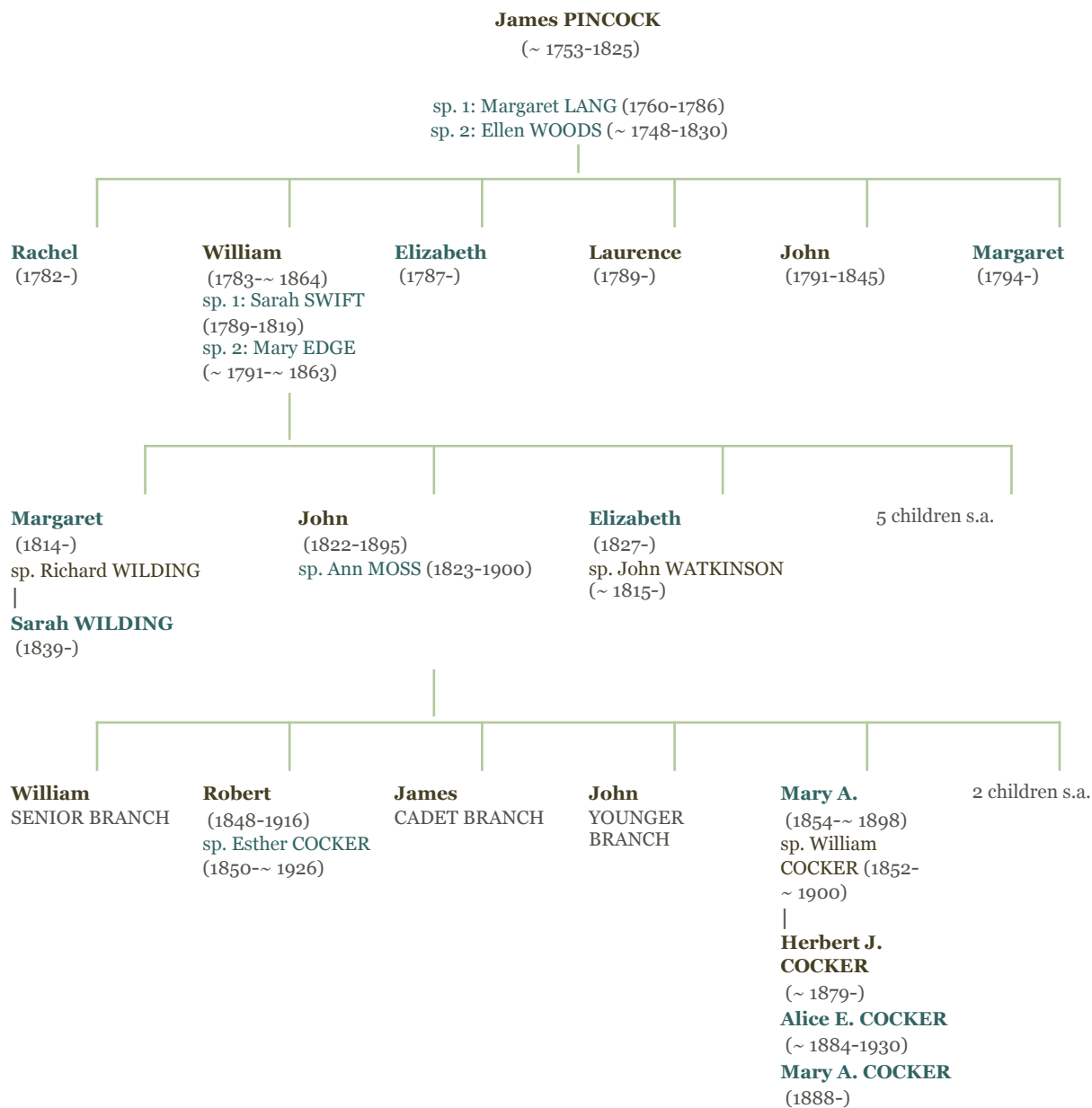
Offspring:

a) **John PINCOCK.**

He was born in Haverfordwest (Pembrokeshire), Wales.

Genealogical Table

James Pincock (~1753-1825)



A Family Tree

SENIOR BRANCH

William Pincock (1846-1914)

William PINCOCK

(1846-1914)

son of John PINCOCK (1822-1895) and Ann MOSS (1823-1900)

sp. 1: Margaret COCKER (1845-- 1886)

sp. 2: Emma F. CROUCH

Ellen

(~ 1870-- 1879)

(~ 1876-)

sp. PRYCE (~ 1875-1944)

|

Mildred (~ 1902-)

Doris (~ 1904-)

Edward (~ 1908-)

William A.

(1882-)

sp. Lily BABB (1881-)

|

6 children s.p.

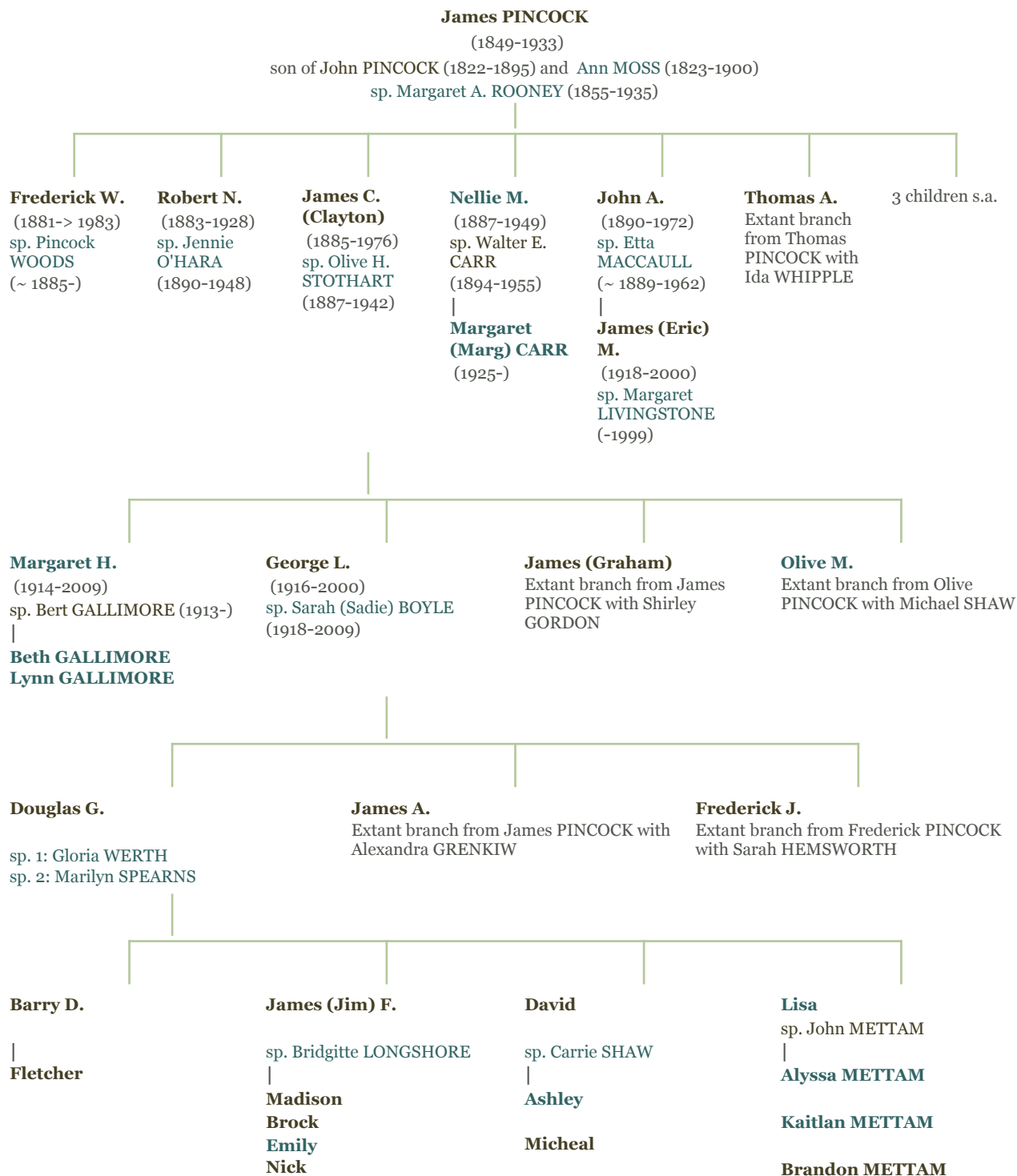
Descendants of James Pincock

CADET BRANCH

Rev. James Pincock (1849-1933)

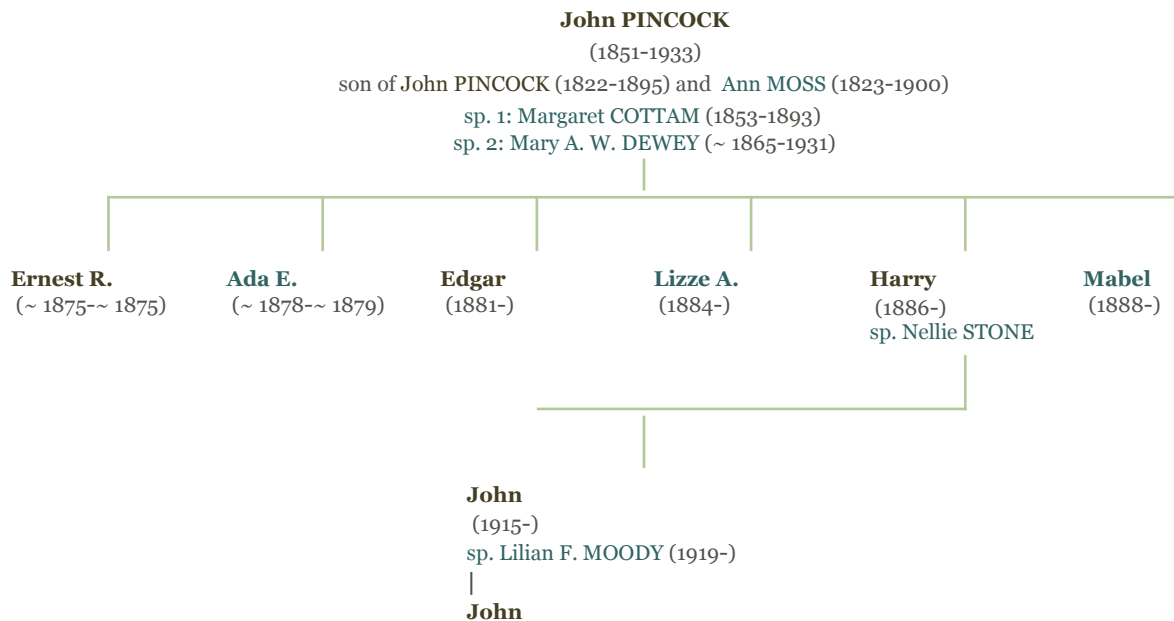
George L. Pincock (1916-2000)

Douglas G. Pincock



YOUNGER BRANCH

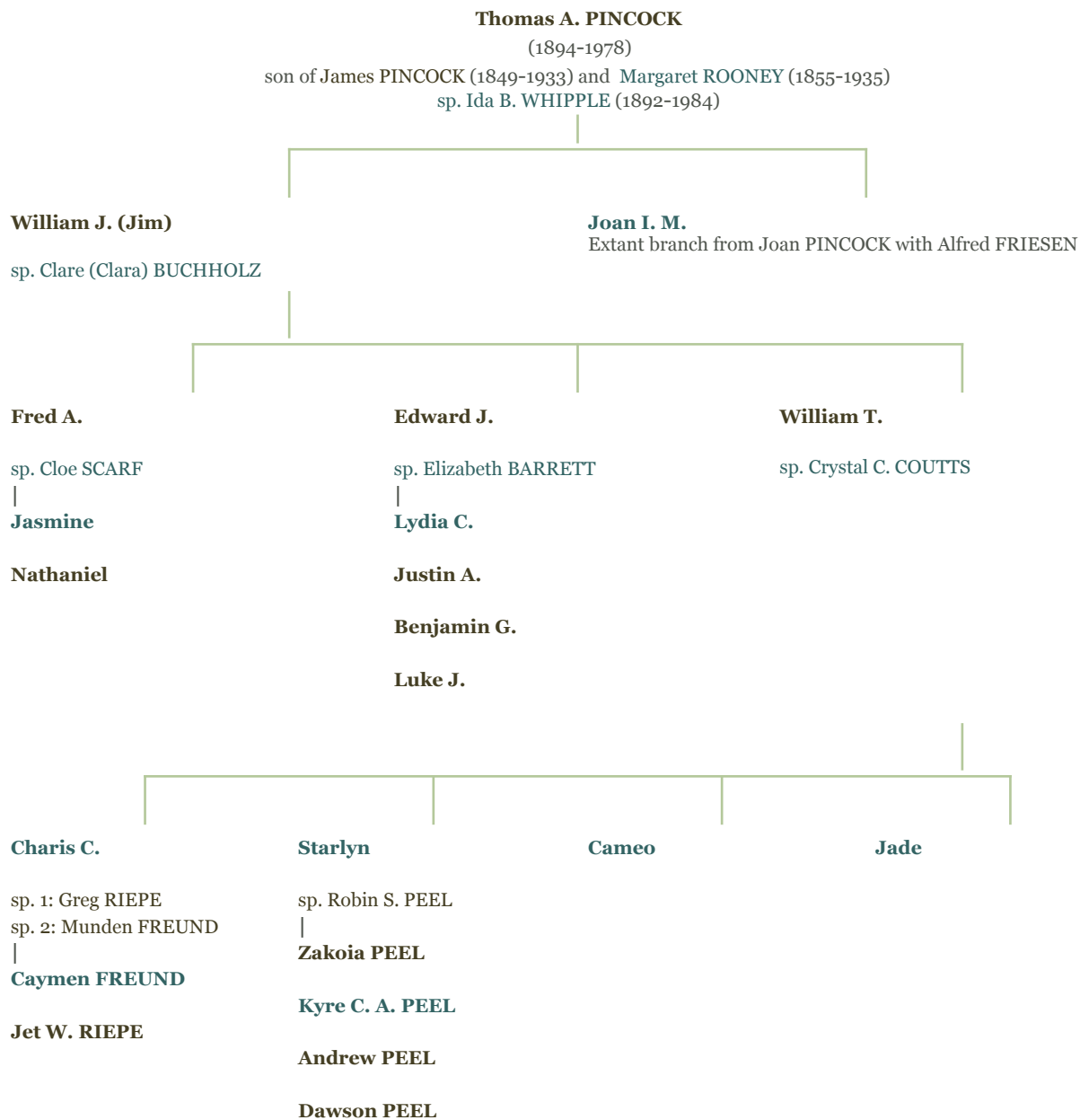
John Pincock (1851-1933)



Descendants of James Pincock

Extant branch from
Thomas PINCOCK with Ida WHIPPLE

Thomas A. Pincock (1894-1978)



A Family Tree

Extant branch from
James PINCOCK with Shirley GORDON

James G. Pincock (1919-2003)

James (Graham) PINCOCK

(1919-2003)

son of James PINCOCK (1885-1976) and Olive STOTHART (1887-1942)
sp. Shirley J. GORDON

Margaret

sp. Robert J.
KAVANAGH
(1943-2009)

Helen

Extant branch from
Helen PINCOCK with
William DARTNELL

Mary O.

Extant branch from
Mary PINCOCK with
Stephen PARK

Gordon J.

(1948-2016)
sp. Linda A. YOUNG
|
6 children s.p.

Donald G.

sp. Dawn A. TRAVIS
|
Robert J.
Jorhi D.

Shirley E. KAVANAGH

Colleen M. KAVANAGH

sp. Paul WARREN

|
Kyle WARREN

Ryan J. WARREN

James G. KAVANAGH

sp. Andrea GANNON

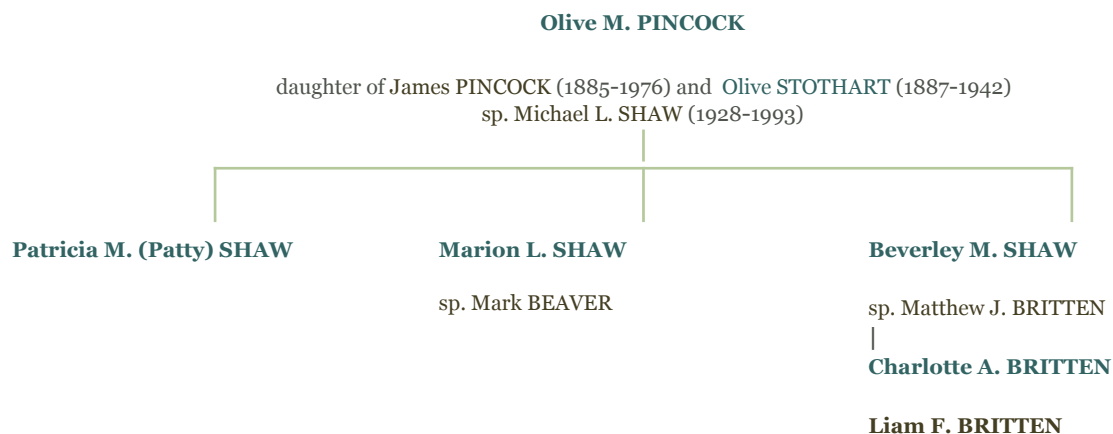
|
Caroline A. KAVANAGH

Charlotte C. KAVANAGH

Descendants of James Pincock

**Extant branch from
Olive PINCOCK with Michael SHAW**

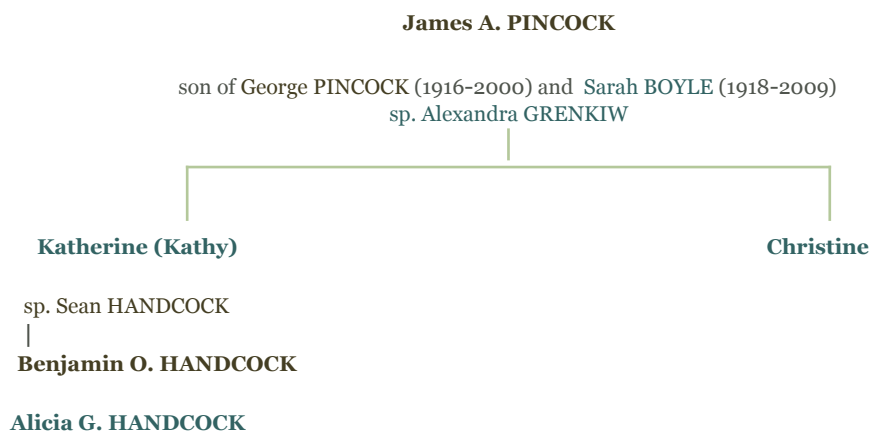
Olive M. Pincock



Other Family Charts

James A. Pincock

**Extant branch from
James PINCOCK with Alexandra GRENKIW**



A Family Tree

Frederick Pincock

**Extant branch from
Frederick PINCOCK with Sarah HEMSWORTH**

Frederick J. PINCOCK

son of George PINCOCK (1916-2000) and Sarah BOYLE (1918-2009)

sp. 1: Sarah E. (Sally) HEMSWORTH

sp. 2: Patricia J. (Pat) ALLAN

Christopher J. (Chris)

Mark J.

Heather A.

sp. 1: Brandi SPENCER
sp. 2: Tansel YILMAZER

sp. Jill M. VANDERZAND

Layla S. Y.

Descendants of James Pincock

Helen Pincock

Extant branch from Helen PINCOCK with William DARTNELL

Helen PINCOCK

daughter of James PINCOCK (1919-2003) and Shirley GORDON
sp. William A. DARTNELL

Andrew W. DARTNELL

sp. Lisa TRUANT

|
Quinnlan J. DARTNELL

Brian D. DARTNELL

sp. Sian TASAKA

|
Benjamin J. DARTNELL

Peter A. DARTNELL

|
Maerin DARTNELL

A Family Tree

Mary Pincock

Extant branch from Mary PINCOCK with Stephen PARK

Mary O. PINCOCK

daughter of James PINCOCK (1919-2003) and Shirley GORDON
sp. Stephen PARK

Jennifer M. PARK

sp. Mike HILLER

|
Evan HILLER

Graham HILLER

Oliver HILLER

Campbell HILLER

Julie M. PARK

|
Nicholas PARK

Olivia PARK

Mackenzie PARK

Molly PARK

Heather L. PARK

sp. John SCOTT

|
Jack SCOTT

Grace SCOTT

Charlie SCOTT

Sam H. SCOTT

Descendants of James Pincock

Joan Pincock

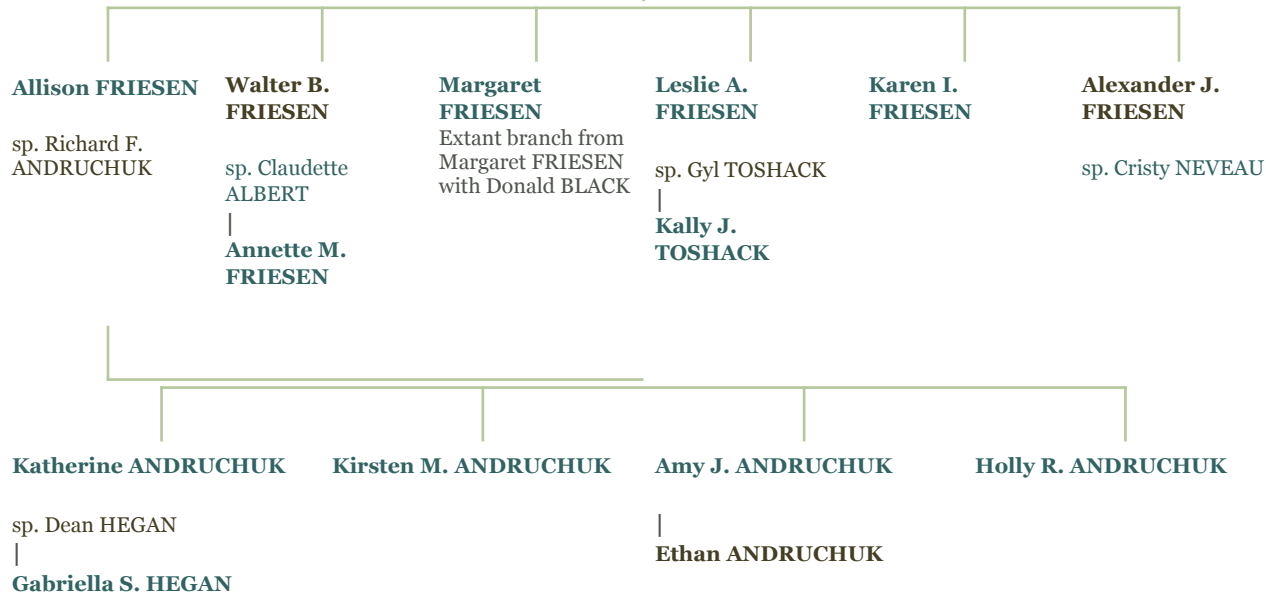
Extant branch from Joan PINCOCK with Alfred FRIESEN

Joan I. M. PINCOCK

(1927-1998)

daughter of Thomas PINCOCK (1894-1978) and Ida WHIPPLE (1892-1984)

sp. Alfred (Al) FRIESEN (1923-2007)



A Family Tree

Extant branch from Margaret FRIESEN with Donald BLACK

Margaret FRIESEN

daughter of Alfred FRIESEN (1923-2007) and Joan PINCOCK (1927-1998)
sp. Donald H. BLACK

Cheryl D. BLACK

Trevor A. BLACK

Steven C. BLACK

sp. Neil MCKINLAY

|
Paige A. MCKINLAY